



Install and maintain tree protection fence as indicated on preservation plan for all trees marked save. Silt protection shall be installed in a trenchless manner within the critical root zone of any tree to be SAVED. (I.E. woodchips, wattles, and hay bales)

I hereby certify that I have viewed the premises and provided this professional opinion regarding the survivability of significant trees on this site and abutting the site. Attached is a site plan illustrating the recommended location of tree protection fencing. This fence is to remain erect throughout the construction project . All tree inspections were performed from the ground and are limited in scope. Tree and utility locations are approximate and locations of utilities are subject to change.

A handwritten signature in black ink, appearing to read "Nick Wibbenmeyer".

Nick Wibbenmeyer
I.S.A. Certified Arborist
MW 6357A



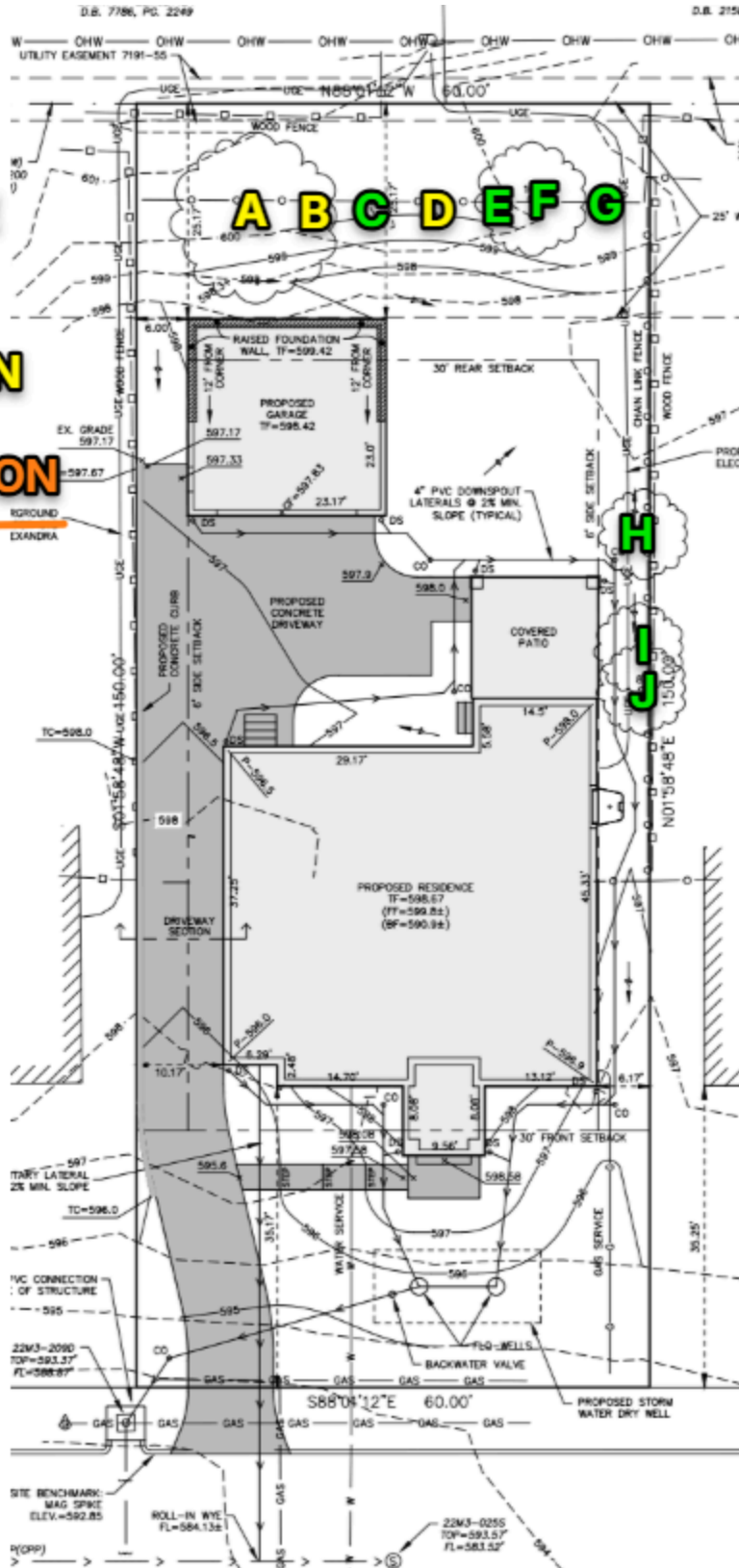
TREE STUDY
SITE PLAN REVIEW
5/18/2026
5/22/2026

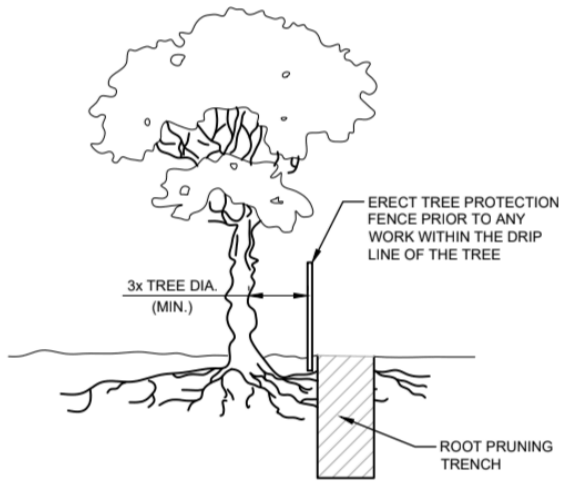
PROPERTY LOCATION: 814 Alexandra

#	TREE SPECIES	BOTANICAL/ LATIN	D B H	PRESERVE/ TBR/ INSTALL	COMMENTS	CONDITION
A	black locust	<i>Robinia pseudoacacia</i>	15"	TBR	involved with fence, vines, exfoliating bark, deadwood GRADING/CONDITION	Poor
B	black locust	<i>Robinia pseudoacacia</i>	6"	TBR	broken leader GRADING/CONDITION	Poor
C	black locust	<i>Robinia pseudoacacia</i>	9"	TBR	phototropic, deadwood GRADING	Fair
D	black locust	<i>Robinia pseudoacacia</i>	9"	TBR	utility topped leader, deadwood GRADING/CONDITION	Poor
E	black oak	<i>Quercus velutina</i>	13"	TBR	involved with fence, lean, deadwood GRADING	Fair
F	black locust	<i>Robinia pseudoacacia</i>	9"	TBR	deadwood GRADING	Fair
G	black locust	<i>Robinia pseudoacacia</i>	8"	TBR	co-dominant top GRADING	Fair
H	American elm	<i>Ulmus americana</i>	7"	TBR	phototropic, minor deadwood FOUNDATION/ UTILITIES	Fair
I	red mulberry	<i>Morus rubra</i>	8"	TBR	phototropic, involved with fence FOUNDATION/ UTILITIES	Fair
J	red mulberry	<i>Morus rubra</i>	8"	TBR	phototropic, involved with fence FOUNDATION/ UTILITIES	Fair
1	Eastern redbud	<i>Cercis canadensis</i>	3"	INSTALL	installed replacement tree	
2	saucer magnolia	<i>Magnolia soulangeana</i>	3"	INSTALL	installed replacement tree	
3	little leaf linden	<i>Tilia cordata</i>	3"	INSTALL	installed replacement tree	
4	flowering dogwood	<i>Cornus florida</i>	3"	INSTALL	installed replacement tree	
5	white oak	<i>Quercus alba</i>	3"	INSTALL	installed replacement tree	
6	post oak	<i>Quercus stellata</i>	3"	INSTALL	installed replacement tree	
A	5 x Inkberry Holly	<i>Ilex glabra</i>	5 Gal	INSTALL		
B	5 x Azalea	Rhododendron	5 Gal	INSTALL		
	Hardwood mulch		2 yds	INSTALL		

TOTAL TREES (@ or above 6" DBH)	TOTAL VIABLE TREES	TREES REMOVED	DEAD/DYING/ DISEASED REMOVE	VIABLE TREES REMOVED	# OF VIABLE INCHES REMOVED	# OF 2.5" CALIPER REPLACEMENT TREES REQUIRED (1 per 10" removed)	OR REPLACEMENT COST @ \$120 PER CALIPER INCH
10	7	10	3	7	62	6	\$2400

PRESERVE
TBR
POOR
CONDITION
TREE
PROTECTION
FENCE





NOTES:

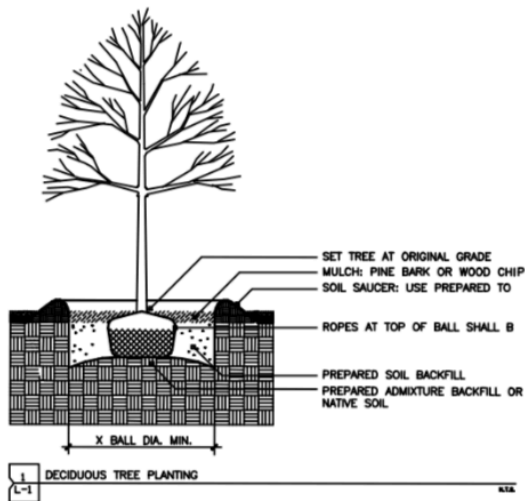
1. ROOT PRUNING SHALL BE DONE WHENEVER THERE WILL BE GRADING, CUTTING OR COMPACTION DISTURBANCE UNDERNEATH THE DRIP LINE OF A TREE. PRIOR TO ANY WORK WITHIN DRIP LINE, THE CONTRACTOR SHALL ERECT A TREE PROTECTION FENCE AND CONTACT AN ISA CERTIFIED ARBORIST TO COORDINATE WORK. NO DISTURBANCE SHALL BE DONE WITHIN A DISTANCE OF 3X THE DIAMETER OF THE TREE, DUE TO STABILITY CONCERNS.
2. ROOT PRUNING SHALL BE DONE WITH A SHARP TOOL, IN SUCH A WAY THAT DOES NOT PULL ON THE ROOTS, BUT LEAVES SMOOTH CUTS. DO NOT TEAR ROOTS WITH EXCAVATION EQUIPMENT. IT IS PREFERABLE TO EXPOSE THE ROOTS PRIOR TO ROOT PRUNING. AFTER PRUNING, FILL THE AREA WITH QUALITY TOPSOIL AND WATER UNTIL THOROUGHLY SOAKED.
3. ONCE EXPOSED, ROOTS MUST BE COVERED WITHIN 8 HOURS. IF ROOTS WILL BE LEFT EXPOSED FOR LONGER THAN 8 HOURS, THEY MUST BE KEPT MOIST. ONE OPTION IS TO PUT MOIST BURLAP OVER THE EXPOSED ROOTS.

NOTES (CONT.):

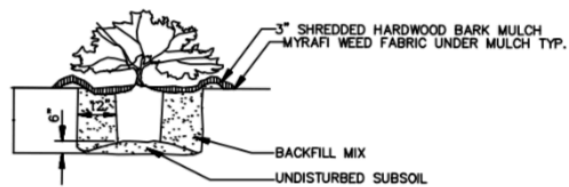
4. ROOT PRUNING SHALL MEET OR EXCEED ANSI A300 OR APPROVED TREE CARE INDUSTRY STANDARDS.

DIGGING PROCESS

1. THE PRUNING TRENCH SHOULD BE CLEARED IN A WAY THAT EXPOSES THE ROOTS WHILE LEAVING THEM INTACT.
 - 1.1. USE HAND TOOLS OR AN AIR KNIFE II) DO NOT USE AN EXCAVATOR, AS THIS WILL PULL ON THE ROOTS AND POSSIBLY DAMAGE THE TRUNK III) IF A ROOT LARGER THAN 2" IS EXPOSED, LEAVE THIS ROOT INTACT AND CONTACT LANDSCAPE SERVICES
 2. ONCE THE ROOTS ARE EXPOSED, USE A SHARP TOOL TO CLEANLY CUT ALL ROOTS WHICH ARE BETWEEN 1-2" DIAMETER, TO THE DEPTH OF THE PROPOSED DISTURBANCE
 - 2.1. APPROPRIATE TOOLS INCLUDE SHARP LOPPING SHEARS, HANDSAWS, A SHARPENED AXE, A ROOT PRUNER GRINDER, A RECIPROCATING SAW AND ANY OTHER SHARP TOOL WHICH LEAVES A CLEAN CUT
 - 2.2. YOU MAY NOT USE A CHAINSAW OR CHAIN TRENCHER TO MAKE THE FINAL CUTS
 - 2.3. ALL ROOTS SHALL BE LEFT WITH A CLEAN, SMOOTH ENDS AND NO RAGGED EDGES
3. POST PRUNING
 - 3.1. TREE ROOTS MUST BE KEPT MOIST. IF ROOTS ENDS WILL BE LEFT EXPOSED FOR MORE THAN 8 HOURS, COVER THE HOLE WITH MOIST BURLAP.
 - 3.2. FILL THE HOLE WITH HIGH QUALITY TOP SOIL, MULCH THE AREA WITH TRIPLE SHREDDED HARDWOOD TO A DEPTH OF 3", AND WATER WELL.



1 DECIDUOUS TREE PLANTING
L-1



NOTE: USE SHREDDED BARK MULCH ONLY

3 SHRUB PLANTING
L-1